

Glantube®

VAC KING



ELECTRIC ASH-VAC

MODEL NO: ASHVAC1200B

PART NO: 6471134

OPERATING & MAINTENANCE INSTRUCTIONS



ORIGINAL INSTRUCTIONS

DL10/23

INTRODUCTION

Thank you for purchasing this CLARKE product which is designed for fast, easy removal of cold ash from stoves and fireplaces.

Before attempting to use this product, please read this manual thoroughly and follow the instructions carefully. In doing so you will ensure the safety of yourself and that of others around you, and you can look forward to your purchase giving you long and satisfactory service.

GUARANTEE

This product is guaranteed against faulty manufacture for a period of 12 months from the date of purchase. Please keep your receipt which will be required as proof of purchase.

This guarantee is invalid if the product is found to have been abused or tampered with in any way, or not used for the purpose for which it was intended.

Faulty goods should be returned to their place of purchase, no product can be returned to us without prior permission.

This guarantee does not effect your statutory rights.

ENVIRONMENTAL RECYCLING POLICY



Through purchase of this product, the customer is taking on the obligation to deal with the WEEE in accordance with the WEEE regulations in relation to the treatment, recycling & recovery and environmentally sound disposal of the WEEE.

In effect, this means that this product must not be disposed of with general household waste. It must be disposed of according to the laws governing Waste Electrical and Electronic Equipment (WEEE) at a recognised disposal facility.

PARTS & SERVICE

This product has been designed to give long and trouble free service. If, however, having followed the instructions in this booklet carefully, you encounter problems, refer to your local CLARKE dealer.

SPECIFICATIONS

Model Number	ASHVAC1200B
Dimensions (W x D x H)	310 x 310 x 365 mm
Weight	3.4 kg (empty)
Drum Capacity	18 Litres
Dust Capacity	12 Litres
Airflow	38l/s
Duty Cycle	S1 (continuous)
Fuse Rating	13A
Power Supply	230V @50Hz 1ph
Motor power rating	1200W
IP Rating	IP20
Power Cable Length	4.15m

Please note that the details and specifications contained herein are correct at the time of going to print. However CLARKE International reserve the right to change specifications at any time without prior notice.

GENERAL SAFETY PRECAUTIONS

Prior to use, all users should become familiar with these instructions.

WORK AREA

1. **AVOID** operating in the presence of flammable liquids or gases. The motor may produce sparks during operation. **DO NOT** use in enclosed areas where flammable, explosive or toxic vapours are given off.

PERSONAL SAFETY

1. **ALWAYS** stay alert, watch what you are doing and use common sense when operating this product. **DO NOT** use the ash-vac while you are tired

or under the influence of medication, drugs or alcohol. Lack of attention can result in personal injury.

2. **NEVER** over-reach. Keep your proper footing and balance at all times to enable better control of the ash-vac in unexpected situations.
3. This product must not be used by children.



Wear a dust mask when disturbing fine dust particles.



Wear eye protection when blowing fine dust particles.

GENERAL PRODUCT USE AND CARE



WARNING: DO NOT USE THIS ASH-VAC TO COLLECT HOT ASHES, COALS OR WOOD EMBERS. ALWAYS ALLOW THE RESIDUE FROM STOVES AND FIREPLACES TO COOL FULLY BEFORE COLLECTING WITH THIS ASH-VAC.

1. **ALWAYS** maintain this product with care and keep it clean for best/safest performance.
2. **NEVER** use this product if any part is damaged. Have it inspected and repaired by your CLARKE dealer. **DO NOT** use if the power cable, plug, or the machine itself, is in poor condition.
3. **NEVER** abuse the power cable. **NEVER** pull on the cable when removing the plug from the socket or lift the ash-vac by the power cable. Take care not to close doors on the cable or allow it to become snagged under furniture/objects with sharp edges. Keep away from heat or oil.
4. Only use extension leads that are of an appropriate power rating and suitable for the work environment. Inspect the extension lead regularly and replace if damaged.
5. **ALWAYS** take care when a long hose is required in the work area as it presents a trip hazard. Tidy the hose away when the job is finished.
6. **NEVER** pick up flammable or readily combustible material or use in the presence of explosive liquids or vapours.
7. **NEVER** pick up burning cigarettes or other smoking substances.
8. **NEVER** abuse this product by standing on it.
9. **ALWAYS** carry this product using the handle.
10. Only use the suction hose provided. A normal plastic vacuum cleaner hose is not suitable and may be damaged.

ELECTRICAL CONNECTIONS



WARNING: READ THESE ELECTRICAL SAFETY INSTRUCTIONS THOROUGHLY BEFORE CONNECTING THE PRODUCT TO THE MAINS SUPPLY.

Before switching the product on, make sure that the voltage of your electricity supply is the same as that indicated on the rating plate. This product is designed to operate on 230VAC 50Hz. Connecting it to any other power source may cause damage.

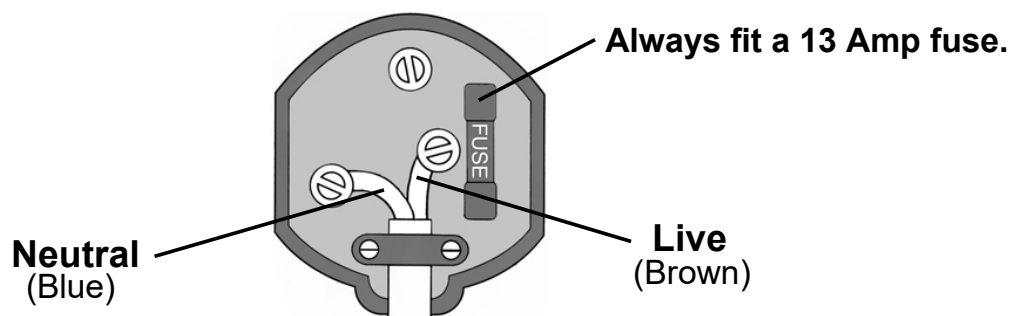
This product may be fitted with a non-rewireable plug. If it is necessary to change the fuse in the plug, the fuse cover must be refitted. If the fuse cover becomes lost or damaged, the plug must not be used until a suitable replacement is obtained.

If the plug has to be changed because it is not suitable for your socket, or due to damage, it should be cut off and a replacement fitted, following the wiring instructions shown below. The old plug must be disposed of safely, as insertion into a mains socket could cause an electrical hazard.

If the colours of the wires in the power cable of this product do not correspond with the markings on the terminals of your plug, proceed as follows.

- The wire which is coloured **Blue** must be connected to the terminal which is marked **N** or **coloured black**.
- The wire which is coloured **Brown** must be connected to the terminal which is marked **L** or coloured red

Plug must be BS1363/A approved.



Ensure that the outer sheath of the cable is firmly held by the clamp

We strongly recommend that this machine is connected to the mains supply via a Residual Current Device (RCD)

If in any doubt, consult a qualified electrician. **DO NOT** attempt any repairs yourself.



This symbol indicates that this is a Class II product, and does not require an earth connection.

COMPONENTS



When unpacking please check contents and advise your dealer immediately if any parts are missing. The essential components are as follows.

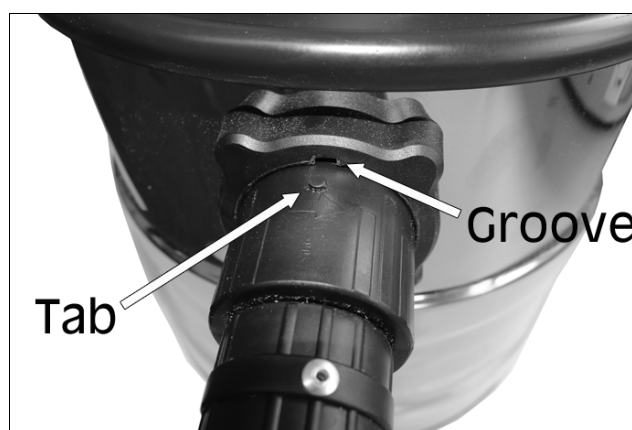
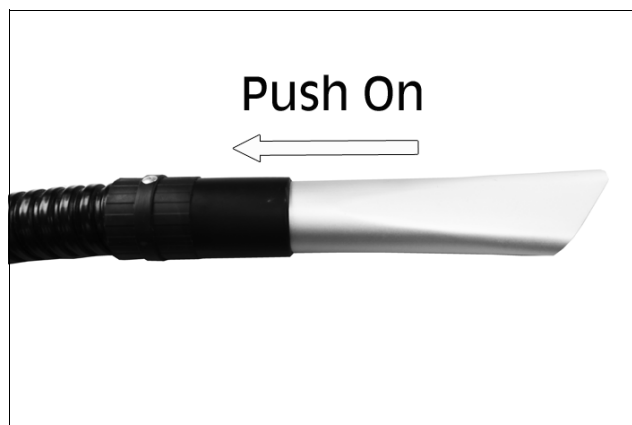
NO	DESCRIPTION
1	Tank
2	Motor/Lid Assembly
3	Suction Hose

NO	DESCRIPTION
4	Suction Tube with Crevice End
5	Suction Tube with Straight End

PREPARATION FOR USE

1. With the ash-vac removed from the packaging, undo the securing clips securing the lid assembly and remove the components from within the tank. Check for shortages and that no damage was suffered in transit.
2. Replace the lid assembly on top of the tank and close the clips
3. Fit the required suction tube on the pickup end of the suction hose, as shown.
4. Insert the suction hose into the air intake on the side of the tank, lining up the tab on the tube with the groove on the top of the intake and turn it clockwise to lock in place.

NOTE: The two ends of the suction hose are different. The end with the collar and swivel fits into the tank.



5. Before plugging into the power supply, the ash-vac should be positioned on a firm, level surface. **DO NOT** cover the ash-vac and always position it with good all-round air ventilation. The ash-vac must always remain upright.

OPERATING INSTRUCTIONS



CAUTION: MAKE SURE THAT FIREPLACES AND STOVES ARE COLD BEFORE YOU ATTEMPT TO VACUUM THEM CLEAN. WAIT UNTIL THE ASH HAS COOLED DOWN COMPLETELY BEFORE YOU BEGIN TO COLLECT IT.

CAUTION: EXCESSIVE TEMPERATURES CAN LEAD TO DAMAGE TO THE SUCTION HOSE AND THE ASH CAN AND CAUSE A RISK OF FIRE.

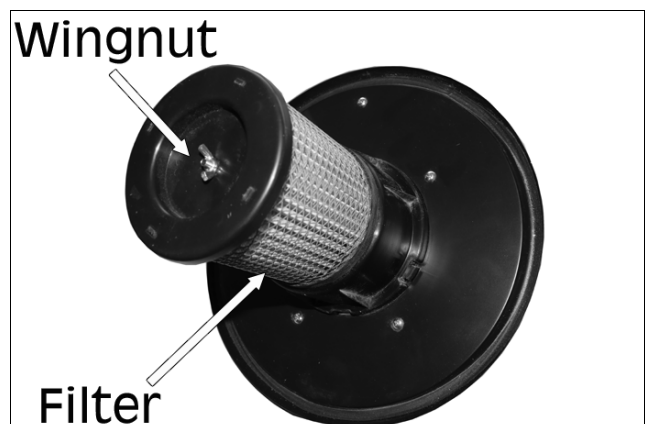
1. Take care not to collect material which appears to have cooled down on the outside but which may still be hot on the inside. Hot ash particles may ignite again in the air flow.
 - Ash with a temperature exceeding 40°C may damage the ash-vac.

2. Switch on the ash-vac and use the suction tube to collect the ash.
3. When moving the ash-vac:
 - **ALWAYS** use the handle.
 - **DO NOT** lift it by (or place a strain on) the hose or power cable.
 - **ALWAYS** switch it off and disconnect it from the mains power supply.
4. **DO NOT** attempt to quickly extinguish fires in fireplaces or stoves with water in order to achieve cool ash. The construction material in the fireplace or stove may not withstand any sudden change in temperature and suffer permanent damage.
5. Regularly check the tube and ash-vac for excess temperature during use. If you notice a significant temperature rise, switch off immediately. Let the ash-vac cool down before emptying the collected material.
6. **ALWAYS** empty the ash-vac after use and clean it when required.
7. If required, the ash-vac may be used to blow a jet of air from the exhaust outlet to clear obstructions within the pipe, as shown. **ALWAYS** make sure the ash-vac is emptied before blowing.
8. If, after a few seconds the hose is still blocked, turn the unit off and clear any blockages manually.
9. The user should empty the ash-vac at regular intervals to prevent it from overheating.



FILTER MAINTENANCE

1. Inspect the cartridge filter regularly and clean it when necessary.
2. Remove the lid assembly and unscrew the wingnut on the top of the filter housing.
3. Remove the wingnut and filter lid.
4. Take off the filter and rinse in warm water.
5. Let the filter dry before reinstalling it.

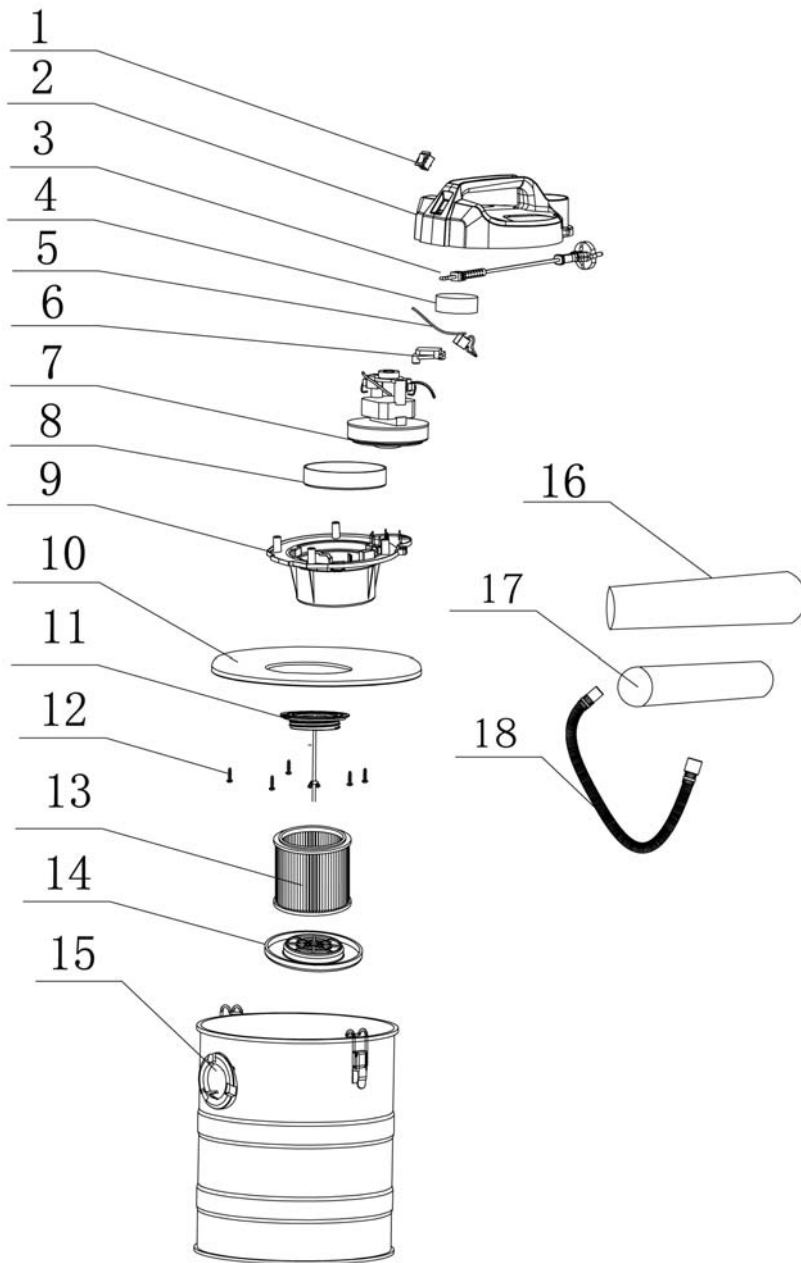


6. Replace the filter, lid and wingnut back in place.
 - Contact your CLARKE dealer for replacement filter if required.

CARE & STORAGE

1. When not in use, turn off using the switch on top of the ash-vac, then unplug from the power supply.
2. When finished work, ensure the electric cable is stowed away by winding it around the handle and that it is not left as a hazard for others to trip over.
3. **DO NOT** change filters or carry out any cleaning of the ash-vac without first disconnecting the ash-vac from the power supply.
4. Keep the external surfaces clean. Avoid impact damage & **DO NOT** allow this product to come into contact with abrasive or corrosive materials.
5. **NEVER** use solvents for cleaning any components.
6. **DO NOT** use solvents, thinners or alcohol to clean the ash-vac, as these chemicals will damage the finish. With the ash-vac unplugged from the power supply, use a dry cloth to wipe over the casing.
7. When not in use this product should be stored in a secure, dry place, out of the reach of children. **DO NOT** leave it exposed to the elements and avoid direct sunlight, direct heat, rain/moisture etc.
8. Only use parts and accessories recommended in this manual. **NEVER** use unauthorised accessories or attachments which may result in personal injury or damage to the product.
9. **DO NOT** attempt to repair or modify this product or attempt any electrical repair yourself. Consult a qualified electrician or the CLARKE Service Department on 020 8988 7400.

PARTS DIAGRAM



Ref No	Description
1	On/Off Switch
2	Top Cover Housing
3	Power Cord
4	Sponge Filter
5	Capacitor
6	Seal cap
7	Motor
8	Rubber seal
9	Motor Housing
10	Top Cover
11	Air Inlet Board
12	Screws
13	HEPA Filter
14	HEPA Cover
15	Tank
16	Crevice Suction Tube
17	Straight Suction Tube
18	Suction Hose

DECLARATIONS OF CONFORMITY



Hennell Street, Epping, Essex, CM16 4LG

DECLARATION OF CONFORMITY

This is an important document and should be retained.

We hereby declare that this product(s) complies with the following legislation:

- The Electromagnetic Compatibility Regulations 2016*
- The Electrical Equipment (Safety) Regulations 2016*
- The Restriction of Use of Certain Hazardous Substances in Electrical and Electronic Equipment Regulations 2012*

The following standards have been applied to the product(s):

- EN 60335-1:2012+A11:2014+A13:2017+A1:2019+A14:2019+A2:2019, EN 60335-2-2:2010+A11:2012+A1:2013, EN IEC 61000-3-2:2019+A1:2021, EN 61000-3-3:2013+A1:2019, EN IEC 58014-1:2021, EN IEC 58014-2:2021, EN 62233:2008, IEC 62321-4:2013+AAMD1:2017 CSV, IEC 62321-7-2:2017, ISO 17075:2017, IEC 62321-8:2017, IEC 62321-7-1:2015, IEC 62321-3-1:2013, IEC 62321-1:2013, IEC 62321-2:2013, IEC 62321-5:2013, IEC 62321-6:2015

The technical documentation required to demonstrate that the product(s) meet(s) the requirement(s) of the aforementioned legislation has been compiled and is available for inspection by the relevant enforcement authorities.

The UKCA mark was first applied in: 2023

Product Description: Ash Vacuum Cleaner
Model Number(s): ASHVAC1200-B
Serial/Batch Number: Refer to product/packageing label
Date of Issue: 10/10/2023

Signed:

J.A Clarke
Director



Fitzwilliam Hall, Fitzwilliam Place, Dublin 2

DECLARATION OF CONFORMITY

This is an important document and should be retained.

We hereby declare that this product(s) complies with the following legislation:

- 2014/30/EU *Electromagnetic Compatibility Directive*
- 2014/35/EU *Low Voltage Directive*
- 2011/65/EU *Restriction of Hazardous Substances (RoHS) Directive*

The following standards have been applied to the product(s):

- EN 60335-1:2012+A11:2014+A13:2017+A1:2019+A14:2019+A2:2019, EN 60335-2-2:2010+A11:2012+A1:2013, EN IEC 61000-3-2:2019+A1:2021, EN 61000-3-3:2013+A1:2019, EN IEC 58014-1:2021, EN IEC 58014-2:2021, EN 62233:2008, IEC 62321-4:2013+AAMD1:2017 CSV, IEC 62321-7-2:2017, ISO 17075:2017, IEC 62321-8:2017, IEC 62321-7-1:2015, IEC 62321-3-1:2013, IEC 62321-1:2013, IEC 62321-2:2013, IEC 62321-5:2013, IEC 62321-6:2015

The technical documentation required to demonstrate that the product(s) meet(s) the requirement(s) of the aforementioned legislation has been compiled and is available for inspection by the relevant enforcement authorities.

The CE mark was first applied in: 2023

Product Description: Ash Vacuum Cleaner
Model Number(s): ASHVAC1200-B
Serial/Batch Number: Refer to product/packageing label
Date of Issue: 10/10/2023

Signed:

J.A Clarke
Director

A SELECTION FROM THE VAST RANGE OF

Clarke®

QUALITY PRODUCTS



AIR COMPRESSORS

From DIY to industrial, Plus air tools, spray guns and accessories.

GENERATORS

Prime duty or emergency standby for business, home and leisure.

POWER WASHERS

Hot and cold, electric and engine driven - we have what you need

WELDERS

Mig, Arc, Tig and Spot. From DIY to auto/industrial.

METALWORKING

Drills, grinders and saws for DIY and professional use.

WOODWORKING

Saws, sanders, lathes, mortisers and dust extraction.

HYDRAULICS

Cranes, body repair kits, transmission jacks for all types of workshop use.

WATER PUMPS

Submersible, electric and engine driven for DIY, agriculture and industry.

POWER TOOLS

Angle grinders, cordless drill sets, saws and sanders.

STARTERS/CHARGERS

All sizes for car and commercial use.



PARTS & SERVICE:

0208 988 7400

Parts Enquiries
Parts@clarkeinternational.com

Servicing & Technical Enquiries
Service@clarkeinternational.com

SALES: UK 01992 565333 or Export 00 44 (0)1992 565335

Clarke® INTERNATIONAL Hemnall Street, Epping, Essex CM16 4LG
www.clarkeinternational.com